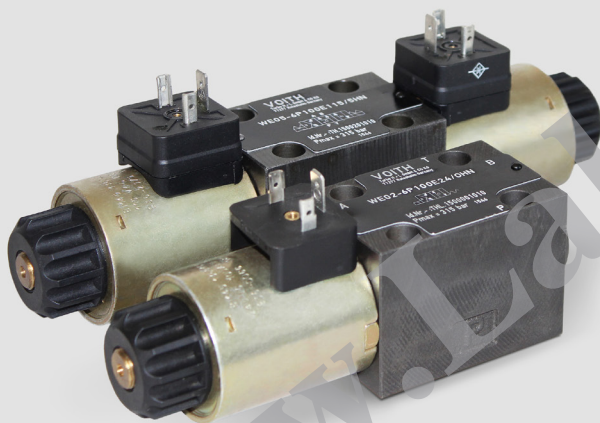


4/2, 4/3 Directional Control Valve NG 6 ISO 4401, directly controlled

Technical Data Sheet



- directly controlled piston valve
- high switching capacity
- saving energy by low flow resistance
- preassure sealed oli-immersed solenoids for direct or alternating current
- easy service: solenoid can be changed without leakage while the valve is under system pressure; no tools are required
- solenoids can be rotated 3 x 90°, allowing alternative connector positions
- port connection pattern according to ISO 4401

Technical Data

General

Type of valve	piston valve
Operation	electric
Mounting	4x M5x45 DIN912
Connection of ports	mounting plate
Mounting position	mountable in any position
Ambient temperature	-25 to +50 °C
Mass valve	2.2 kg

Hydraulic

Operation pressure P,A,B	315 bar
Operation pressure T	160 bar
Hydraulic oil temperature	-10 to +70 °C
Viscosity range	20 to 400 mm ² /s
max. flow	80 l/min

Electric

Voltage (±10%)	24 V DC	230V, 50Hz AC
Switching time on *	40 ms	40 ms
Switching time off **	40 ms	40 ms
Power consumption P20	32 W	
Start up peak P20		39 VA
Duty factor	100%	100%
Protection system		
DIN 40050	IP65	IP65

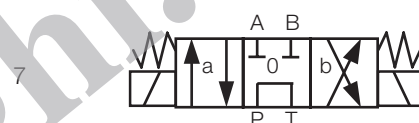
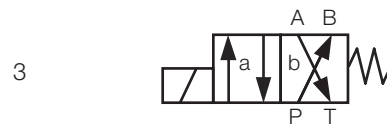
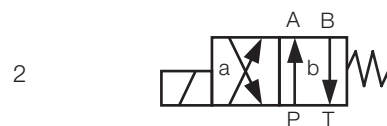
* at 24V DC ±5%

** at terminal voltage = -50V at free circuit

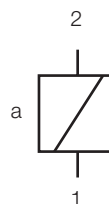
Options

- alternative voltages
- alternative symbols - data sheet: 14607-DSH
- alternativ connectors
- 8 watt variant: max. operating pressure 140 bar
max. rate of flow 40 l/min

Symbol

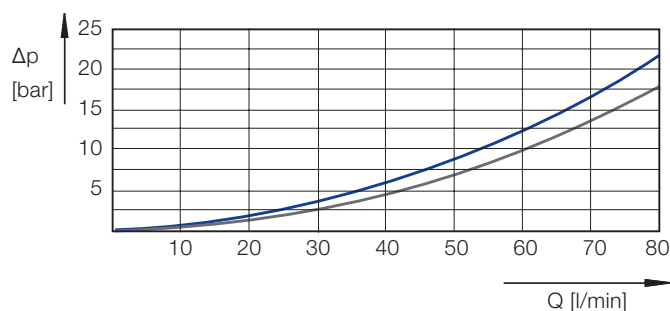


Electric Connection



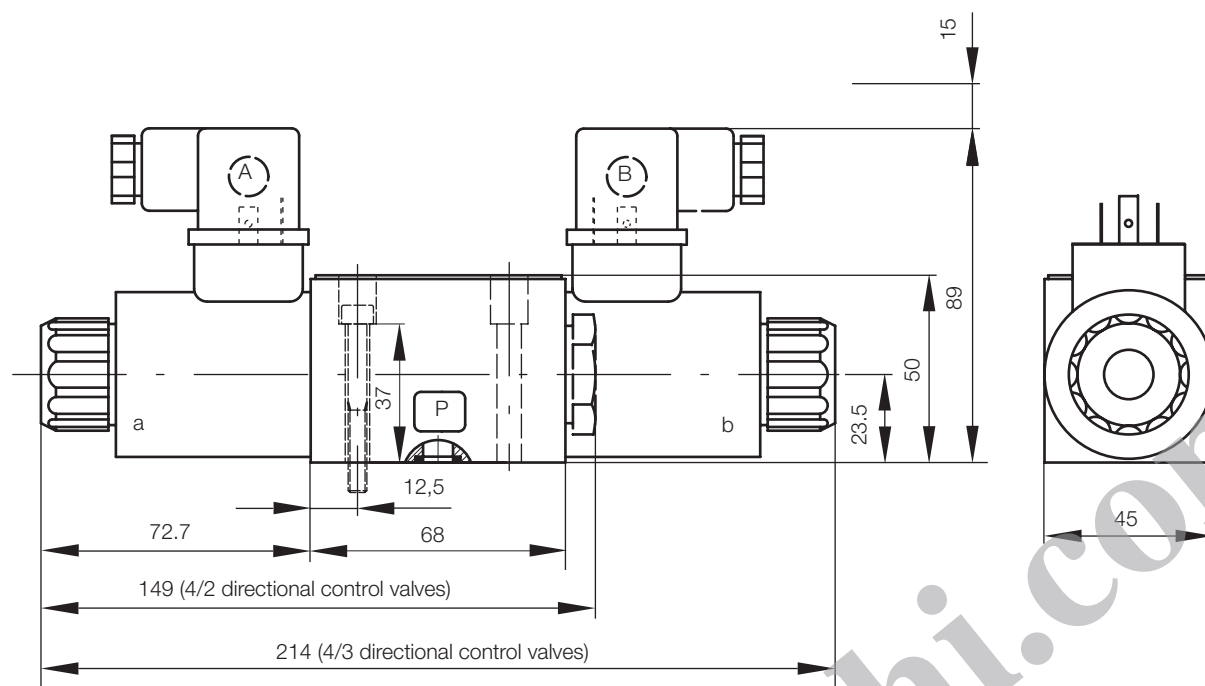
connector type: DIN 43650, design A

Characteristic Curve



hydraulic oil 35 mm²/s, 50°C

Dimensional drawing

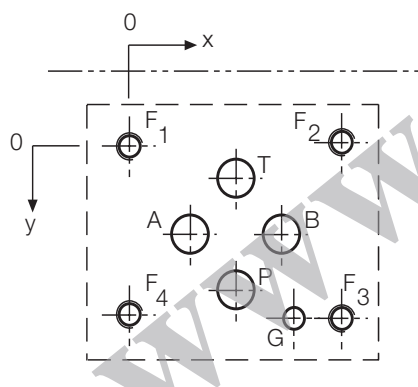


electric connector not included

fastening screws not included, 4x M5x45 DIN 912 - 10.9, MA = 8 Nm

all dimensions in mm

Port Connection Pattern NG 6 ISO 4401



view: fastening side of mounting plate

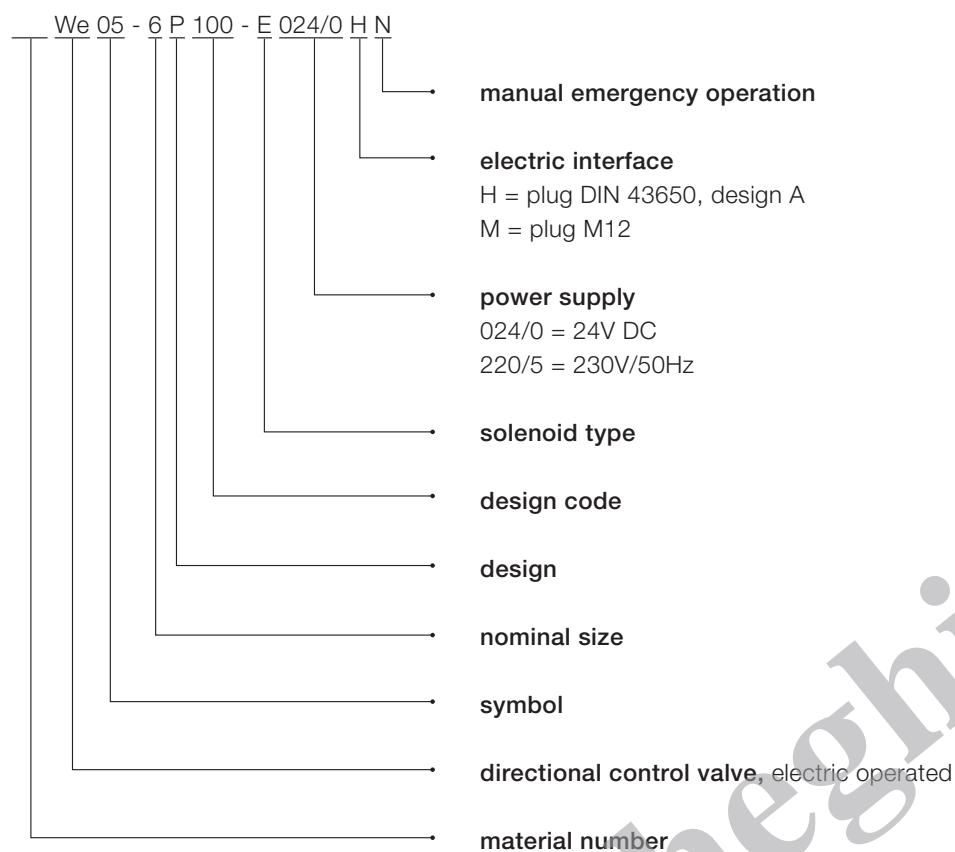
	P	A	T	B	F1	F2	F3	F4	G
Ø max [mm]	7,5	7,5	7,5	7,5	-	-	-	-	4
x [mm]	21,5	12,7	21,5	30,2	0	40,5	40,5	0	33
y [mm]	25,9	15,5	5,1	15,5	0	-0,75	31,75	31	31,75

F: M5, thread depth minimum $1.5 \times \varnothing$

G: bore hole depth minimum $1.5 \times \varnothing$

Various single and multiple mounting plates are available.

Type Code



This is a translated document. Original language: german.
Legally binding language version of document: german.

Voith Turbo H + L Hydraulic GmbH & Co. KG
Schuckertstraße 15
71277 Rutesheim, Germany
Tel. +49 7152 992 3
Fax +49 7152 992 400
sales-rut@voith.com
www.voith.com/hydraulic-systems



VOITH
Engineered Reliability